

# **SOIL DATA:**

**West Winds**

**in**

**Oklahoma City, OK**

This information was taken from soil survey of  
Oklahoma County, Oklahoma.

United States Department of Agriculture  
Natural Resources Conservation Service in cooperation with  
the Oklahoma Agricultural Experiment Station and the Oklahoma  
Conservation Commission

*Seasonal high water table:* None

*Major landform:* Low flood plains

*Slope:* 0 to 1 percent

*Parent material:* Sandy alluvium

### **Use and Management**

**Uses:** Cropland, hayland, pasture, rangeland, and urban development

#### **Cropland**

*Suitability:* Yahola—suited; Gracemont—poorly suited; Gaddy—poorly suited

*Management concerns:* Flooding, fertility, hazard of erosion, available water capacity, and content of organic matter

#### **Rangeland**

*Suitability:* Yahola—suited; Gracemont—suited; Gaddy—suited

*Management concerns:* Flooding, content of organic matter, hazard of erosion, controlled grazing, and drainage

#### **Pasture and hayland**

*Suitability:* Yahola—well suited; Gracemont—well suited; Gaddy—suited

*Management concerns:* Flooding, fertility, content of organic matter, and hazard of erosion

#### **Urban development**

*Suitability:* Yahola—poorly suited; Gracemont—poorly suited; Gaddy—poorly suited

*Management concerns:* Flooding, droughtiness, caving of cutbanks, seepage, and high water table

### **3. OK094—Kirkland-Renfrow-Zaneis (Kirkland-Urban Land-Renthin)**

*Areas of very deep and deep, well drained, clayey soils and areas of Urban land; on prairie uplands (fig. 2)*

#### **Setting**

*Location in the survey area:* The western half of the county

*Primary landscape:* Uplands

*Slope:* 0 to 5 percent

#### **Composition**

*Extent of the unit in the survey area:* 14 percent of the area

*Extent of the components in the unit:*

Kirkland soils—26 percent

Urban land—25 percent

Renthin soils—19 percent

Minor components—30 percent (Ashport,

Bethany, Coyle, Grainola, Harrah, Ironmound, Kingfisher, Lawrie, Norge, Piedmont, and Renfrow soils)

### **Soil Characteristics**

#### **Kirkland**

*Surface layer:* Dark grayish brown and grayish brown silt loam

*Subsoil:* Very dark grayish brown, dark grayish brown, and brown silty clay and grayish brown, strong brown, and reddish yellow clay loam

*Depth class:* Very deep

*Drainage class:* Well drained

*Seasonal high water table:* None

*Major landform:* Uplands hills or upland terraces

*Slope:* 0 to 1 percent

*Parent material:* A clayey mantle over shale

#### **Urban land**

*Surface layer:* Various textures; covered by streets, parking lots, buildings, and other structures

*Slope:* 1 to 5 percent

*Runoff rate:* High

#### **Renthin**

*Surface layer:* Dark brown silt loam

*Subsoil:* Dark brown clay loam and reddish brown and red clay

*Bedrock:* Reddish brown and red shale

*Depth class:* Deep

*Drainage class:* Well drained

*Seasonal high water table:* None

*Major landform:* Upland hills

*Slope:* 1 to 3 percent

*Parent material:* Shale residuum

### **Use and Management**

**Uses:** Cropland, pasture, hayland, rangeland, and urban development

#### **Cropland**

*Suitability:* Kirkland—well suited; Urban land—not suited; Renthin—suited

*Management concerns:* A clayey subsoil, hazard of erosion, and very slow permeability

#### **Rangeland**

*Suitability:* Kirkland—suited; Urban land—not suited; Renthin—suited

*Management concerns:* A clayey subsoil, weed control, and rotational grazing

#### **Pasture and hayland**

*Suitability:* Kirkland—suited; Urban land—not suited; Renthin—suited

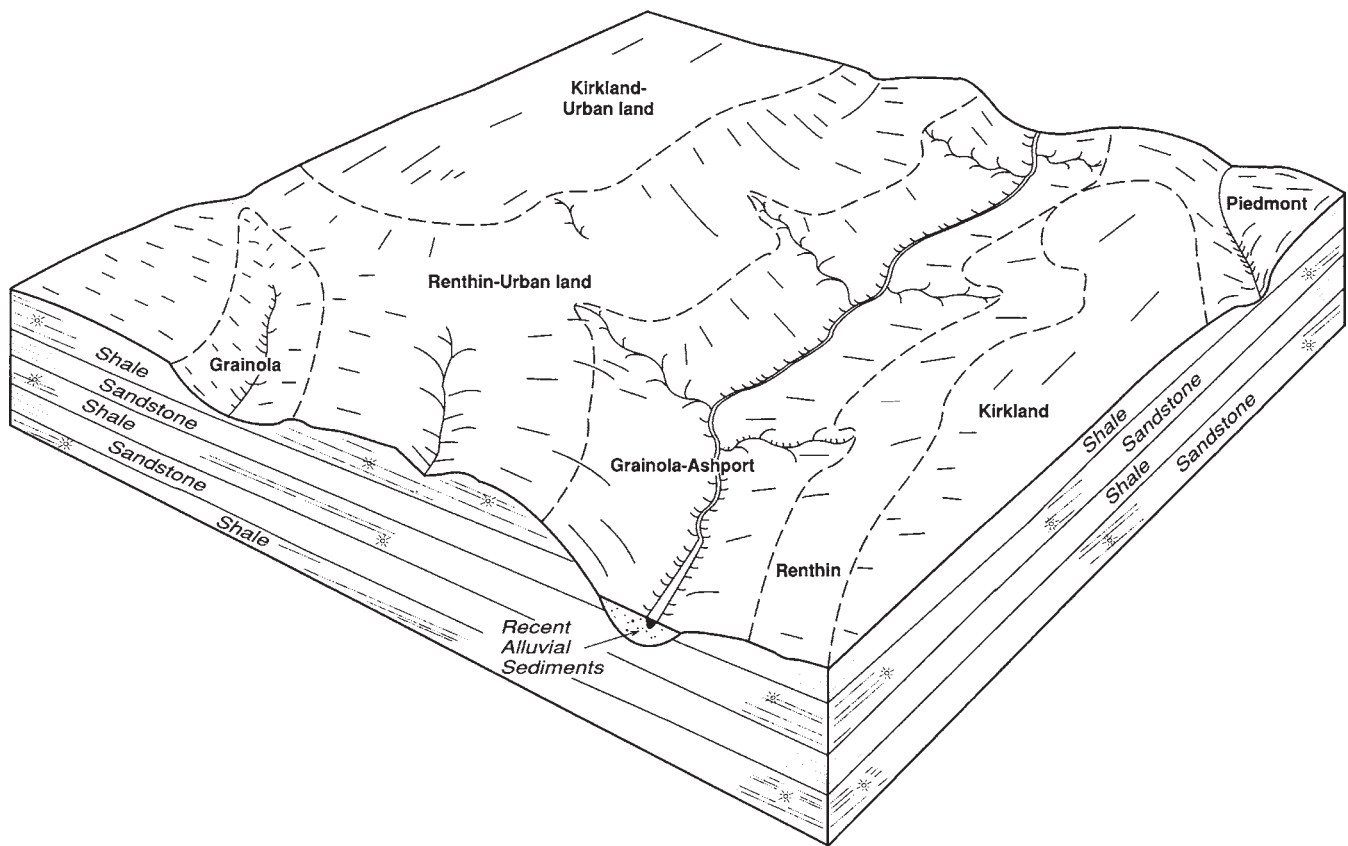


Figure 2.—Typical pattern of soils and underlying material in the Kirkland-Urban land-Renthin general soil map unit.

*Management concerns:* A clayey subsoil, weed control, rotational grazing, and soil tilth

#### **Urban development**

*Suitability:* Kirkland—poorly suited; Urban land—suited; Renthin—poorly suited

*Management concerns:* A high shrink-swell potential, very slow permeability, high corrosivity to steel, hazard of erosion, and a clayey subsoil

#### **4. OK112—Port-Pulaski-Ashport (Ashport-Miller)**

*Very deep, well drained and moderately well drained, loamy and clayey soils on flood plains (fig. 3)*

##### **Setting**

*Location in the survey area:* Low flood plains along minor streams in the northwest part of the county

*Primary landscape:* Valleys

*Slope:* 0 to 1 percent

#### **Composition**

*Extent of the unit in the survey area:* 5 percent of the area

*Extent of the components in the unit:*

Ashport soils—39 percent

Miller soils—23 percent

Minor components—38 percent (Easpur, Hibsaw, Lawrie, Lomill, Pulaski, and Tribbey soils)

#### **Soil Characteristics**

##### **Ashport**

*Surface layer:* Reddish brown silt loam

*Subsoil:* Reddish brown silt loam

*Substratum:* Stratified reddish brown silt loam and brown very fine sandy loam

*Underlying material:* Reddish brown silt loam

*Depth class:* Very deep

*Drainage class:* Well drained

*Seasonal high water table:* None

*Major landform:* Low flood plains

*Slope:* 0 to 1 percent

*Parent material:* Loamy alluvium