

SOIL DATA:

Antler Farms

in

Oklahoma County, OK

This information was taken from soil survey of
Oklahoma County, Oklahoma.

United States Department of Agriculture
Natural Resources Conservation Service in cooperation with
the Oklahoma Agricultural Experiment Station and the Oklahoma
Conservation Commission

Miller

Surface layer: Reddish brown silty clay
Subsoil: Reddish brown silty clay
Substratum: Reddish brown silty clay
Underlying material: Dark brown silty clay loam
Depth class: Very deep
Drainage class: Moderately well drained
Seasonal high water table: None
Major landform: Low flood plains
Slope: 0 to 1 percent
Parent material: Clayey alluvium

Use and Management

Uses: Cropland, hayland, pasture, rangeland, and urban development

Cropland

Suitability: Ashport—well suited; Miller—suited
Management concerns: Flooding, tilth, permeability, and fertility

Rangeland

Suitability: Ashport—suited; Miller—suited

Management concerns: Flooding, tilth, and controlled grazing

Pasture and hayland

Suitability: Ashport—well suited; Miller—suited
Management concerns: Flooding, fertility, hazard of erosion, and tilth

Urban development

Suitability: Ashport—poorly suited; Miller—poorly suited
Management concerns: Flooding, low strength, the shrink-swell potential, and restricted permeability

5. OK116—Renfrow-Kirkland-Grainola (Renthin-Grainola-Piedmont)

Deep and moderately deep, well drained, clayey soils on prairie uplands (fig. 4)

Setting

Location in the survey area: Northwestern part of the county

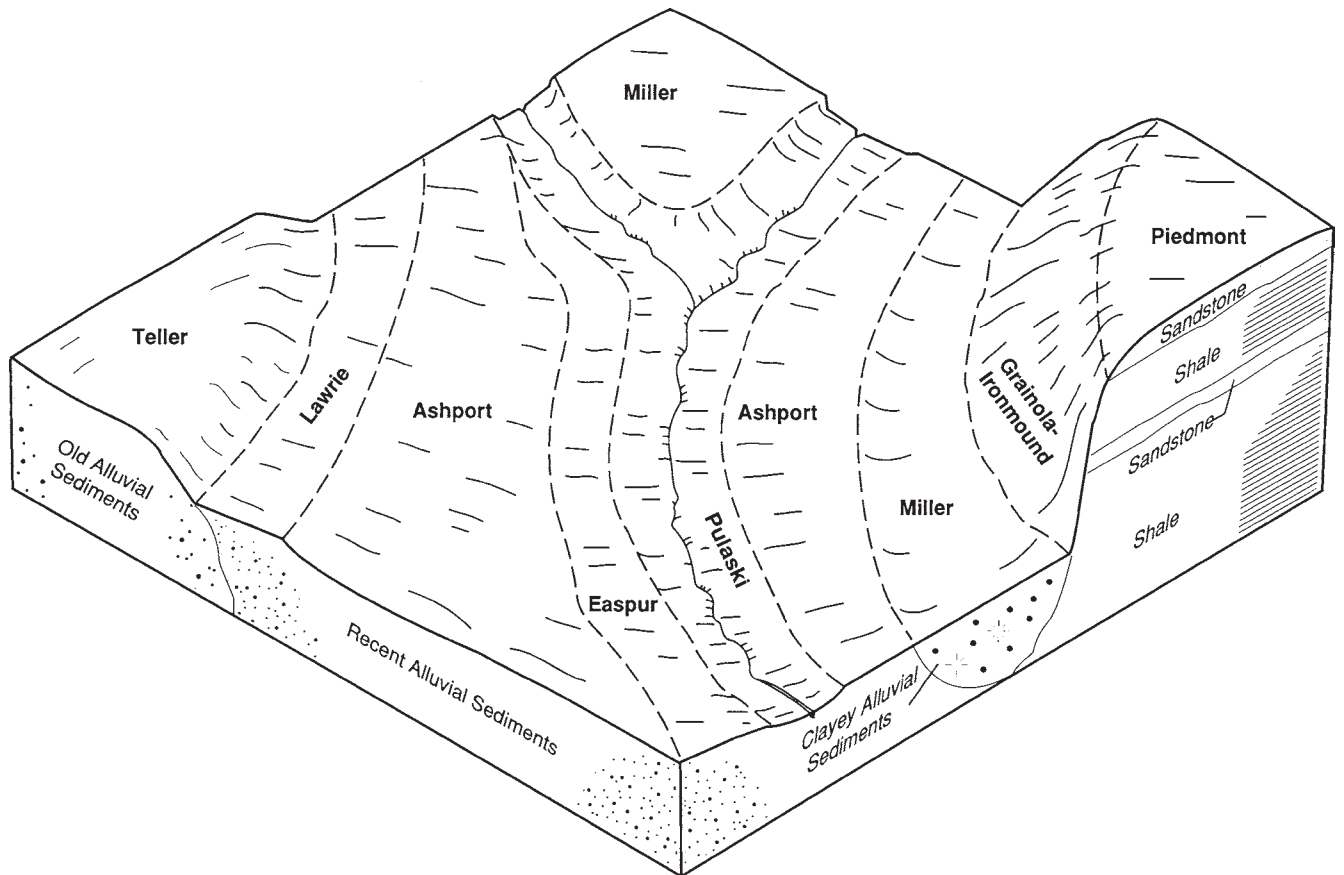


Figure 3.—Typical pattern of soils and underlying material in the Ashport-Miller general soil map unit.

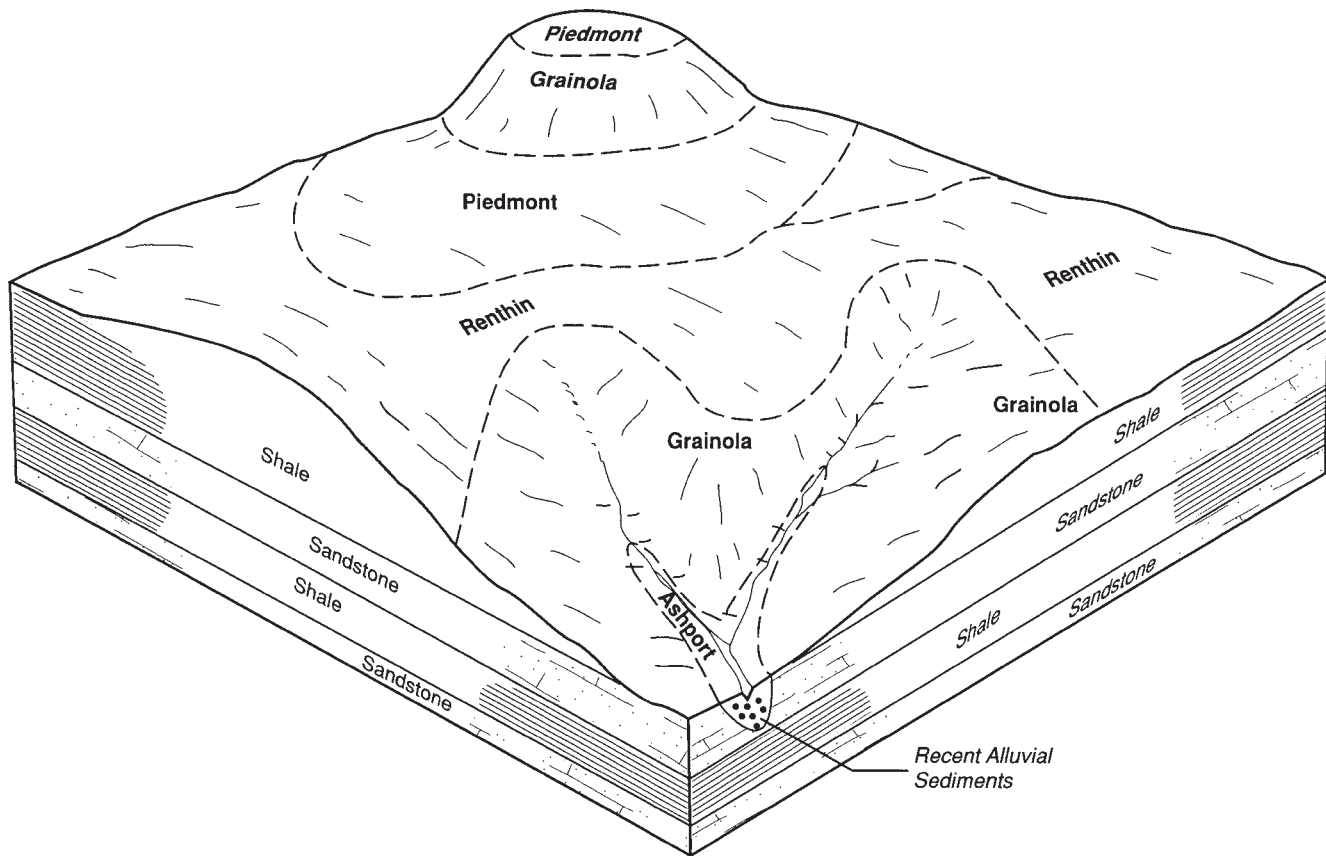


Figure 4.—Typical pattern of soils and underlying material in the Renthin-Grainola-Piedmont general soil map unit.

Primary landscape: Uplands

Slope: 1 to 8 percent

Composition

Extent of the unit in the survey area: 14 percent of the area

Extent of the components in the unit:

Renthin soils—42 percent

Grainola soils—18 percent

Piedmont soils—14 percent

Minor components—26 percent (Ashport, Bethany, Coyle, Grant, Huska, Ironmound, Kingfisher, Kirkland, Lawrie, Miller, Norge, Renfrow, Teller, and Teval soils, Pits, and Urban land)

Soil Characteristics

Renthin

Surface layer: Dark brown silty clay loam

Subsoil: Dark reddish gray silty clay loam and reddish brown silty clay

Bedrock: Red shale

Depth class: Deep

Drainage class: Well drained

Seasonal high water table: None

Major landform: Upland hills

Slope: 3 to 5 percent

Parent material: Shale residuum

Grainola

Surface layer: Dark brown silty clay loam

Subsoil: Reddish brown silty clay loam and red silty clay

Bedrock: Red shale

Depth class: Moderately deep

Drainage class: Well drained

Seasonal high water table: None

Major landform: Upland hills

Slope: 5 to 8 percent

Parent material: Shale residuum

Piedmont

Surface layer: Dark brown silt loam

Subsoil: Reddish brown silty clay loam and silty clay

Bedrock: Reddish brown shale

Depth class: Moderately deep

Drainage class: Well drained

Seasonal high water table: None

Major landform: Upland hills

Slope: 1 to 3 percent

Parent material: Shale residuum

Use and Management

Uses: Cropland, hayland, pasture, rangeland, and urban development

Cropland

Suitability: Renthin—suited; Grainola—poorly suited; Piedmont—suited

Management concerns: Very slow permeability, hazard of erosion, and a clayey subsoil

Rangeland

Suitability: Renthin—suited; Grainola—suited; Piedmont—suited

Management concerns: Weed control, rotational grazing, timely deferment of grazing, and a clayey subsoil

Pasture and hayland

Suitability: Renthin—suited; Grainola—poorly suited; Piedmont—suited

Management concerns: Weed control, a clayey subsoil, fertility, and rotational grazing

Urban development

Suitability: Renthin—poorly suited; Grainola—poorly suited; Piedmont—poorly suited

Management concerns: A high shrink-swell potential, very slow permeability, depth to bedrock, high corrosivity, and hazard of erosion

6. OK121—Teller-Konawa-Norge (Teller-Urban Land-Norge)

Areas of very deep, well drained, loamy soils and areas of Urban land; on terraces

Setting

Location in the survey area: Along the North Canadian River

Primary landscape: Upland terraces

Slope: 1 to 8 percent

Composition

Extent of the unit in the survey area: 6 percent of the area

Extent of the components in the unit:

Teller soils—38 percent

Urban land—34 percent

Norge soils—12 percent

Minor components—16 percent (Lawrie,

Stephenville, Renthin, Vanoss, and Zaneis soils, Pits, and Water)

Soil Characteristics

Teller

Surface layer: Dark brown fine sandy loam

Subsoil: Reddish brown sandy loam and sandy clay loam, yellowish red sandy clay loam, and reddish yellow very fine sandy loam

Substratum: Reddish yellow very fine sandy loam

Depth class: Very deep

Drainage class: Well drained

Seasonal high water table: None

Major landform: Stream terraces

Slope: 1 to 3 percent

Parent material: Loamy alluvium

Urban land

Surface layer: Various textures; covered by streets, parking lots, buildings, and other structures

Depth class: Variable

Slope: 1 to 8 percent

Runoff rate: High

Norge

Surface layer: Dark brown silt loam

Subsoil: Reddish brown, yellowish red, red, and light red silty clay loam

Depth class: Very deep

Drainage class: Well drained

Seasonal high water table: None

Major landform: Upland terraces

Slope: 1 to 5 percent

Parent material: Loamy alluvium

Use and Management

Uses: Cropland, hayland, pasture, rangeland, and urban development

Cropland

Suitability: Teller—well suited; Urban land—not suited; Norge—well suited

Management concerns: Hazard of erosion and slope

Rangeland

Suitability: Teller—suited; Urban land—not suited; Norge—suited

Management concerns: Weed control, rotational grazing, and hazard of erosion

Pasture and hayland

Suitability: Teller—well suited; Urban land—not suited; Norge—well suited

Management concerns: Weed control, fertility, and hazard of erosion